

An guten Tagen ist es leicht zu loben

Text: Helga Winkel
Musik: Christel Schröder

Violine 1

Vorspiel



TEIL A

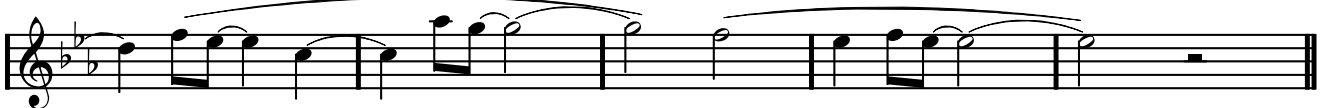
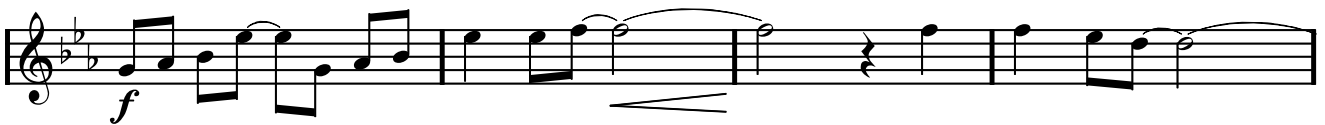
Strophe 1+2



Refrain



TEIL B

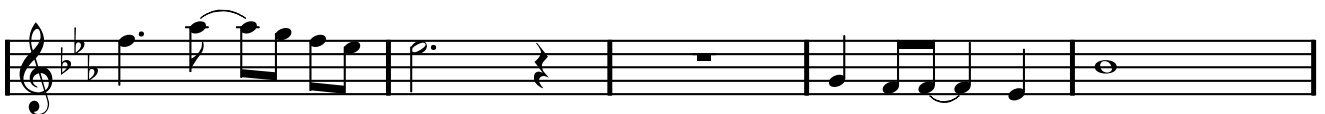


Zwischenpiel



TEIL A

Strophe 3+4



Refrain

Musical notation for the Refrain section, consisting of two staves. The first staff begins with a treble clef, a key signature of two flats (B-flat and E-flat), and a common time signature. It contains a whole note, followed by a half note, and then a series of eighth notes. A dynamic marking *f* is placed below the first half note. The second staff continues the melodic line with eighth notes and quarter notes, ending with a double bar line.

TEIL B

Musical notation for TEIL B and CODA sections, consisting of three staves. The first staff starts with a treble clef, two flats, and common time. It features a series of eighth notes with a dynamic marking *f* and a hairpin indicating a crescendo. The second staff is labeled CODA and continues the melodic line. The third staff concludes the section with a double bar line.